

**2021
MUSIC**

Total marks : 70

Time : 3 hours

General instructions:

- i) *Approximately 14 minutes is allotted to read the question paper and revise the answers.*
- ii) *All questions are compulsory.*
- iii) *The question paper consists of 32 questions.*
- iv) *Marks allocated to every question are indicated against it.*

N.B: *Check that all pages of the question paper is complete as indicated on the top left side.*

SECTION - A : (Ethnic Music)

- 1. Early musical instruments were made from 'found objects' such as : **1**
 - a) sticks and stones
 - b) shells and plant parts
 - c) bottles and jars
 - d) buttons and rags.


- 2. The 'phoebe goalparensis' is used for making : **1**
 - a) drum
 - b) log drum
 - c) tati
 - d) trumpet.

- 3. Naga folk songs are both: **1**
 - a) romantic & agricultural
 - b) romantic & historical
 - c) romantic & sentimental
 - d) romantic & emotional

- 4. Write a brief note on the drum. **2**

- 5. Write short notes on **any two** of the following: **2½+2½ =5**
 - a) Bamboo mouth organ
 - b) Bamboo flute
 - c) Cup violin
 - d) Bamboo sounding box

SECTION - B : (Western Music)

- 6. Four semiquavers () is equivalent to: **1**
 - a) half a crotchet beat
 - b) one crotchet beat
 - c) one-half crotchet beat
 - d) two crotchet beats

7. Name the given note :

1



- a) B b) F c) C d) E

8. Choose the correct time signature for the given notation:



1

- a) $\frac{3}{4}$ b) $\frac{3}{8}$ c) $\frac{6}{8}$ d) $\frac{9}{8}$

9. Identify the given interval.

1



- a) Major 6th b) Minor 6th c) Major 7th d) Perfect 5th

10. Which minor key has two flats in its key signature?

1

- a) G minor b) D minor c) A minor d) E minor

11. Which of the following is not correctly grouped?

1

- a) b) c) d)

12. The dominant triad can be labelled with:

1

- a) ~~III~~ b) V c) 5 d) 5th

13. Write correctly grouped quaver or semi quaver rests below the asterisks.

$\frac{1}{2} \times 4 = 2$

19. Construct the following scales, without key signature, descending, using crotchets in the bass stave. 1+1=2

- a) B^b major
- b) G major

20. Circle the two roots in the following chords. 2

a)

b)

21. Write triads on the tonic and dominant degrees of the B minor (harmonic) scale going down. Use semibreves and label with roman numerals in the bass stave. Give key signature. 2

22. Identify the following. 2

a)

b)

23. Write some quaver triplets to agree with the time signature (one bar each) 1+1=2

a)

b)

24. Draw the following intervals up from the given keys as directed. 6x1/2=3

(a)

Perfect fifth

(b)

Perfect fourth

(c)

Major sixth

(d)

Minor 2nd

(e)

Major 3rd

(f)

Major 7th

25. Construct broken chords, descending, for the given keys. Finish no less than 2 leger lines below the stave. Use key signature. **1½+1½=3**

- a) Bm tonic triad in $\frac{3}{2}$ time, using minims on the treble clef.
- b) D major tonic triad in $\frac{6}{8}$ time, using semiquavers triplets on the bass clef.

26. Using minims, write out 4 part chords for SATB using chords of the giving keys. Double the root in each case. Give time signature and key signature. **1½+1½=3**

- a) B^b major
- b) D minor

27. Label the triads with roman numerals and chord symbols to show the chord progression. **1½+1½=3**

a) (A minor)

b) (E minor)

28. Add crotchet or quaver rests in the places marked by an asterisk (*) to complete the bars. Use brackets wherever necessary. **3x1=3**

a)

b)

c)

29. Transpose the following tunes as directed.

$1\frac{1}{2}+1\frac{1}{2}=3$

a) Down an octave.

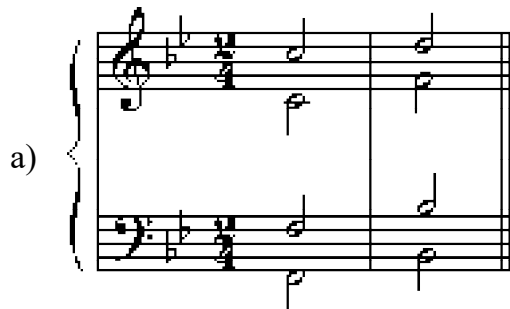


b) Up an octave.



30. Identify the cadences and label them with correct roman numerals and key names.

$1\frac{1}{2}+1\frac{1}{2}=3$



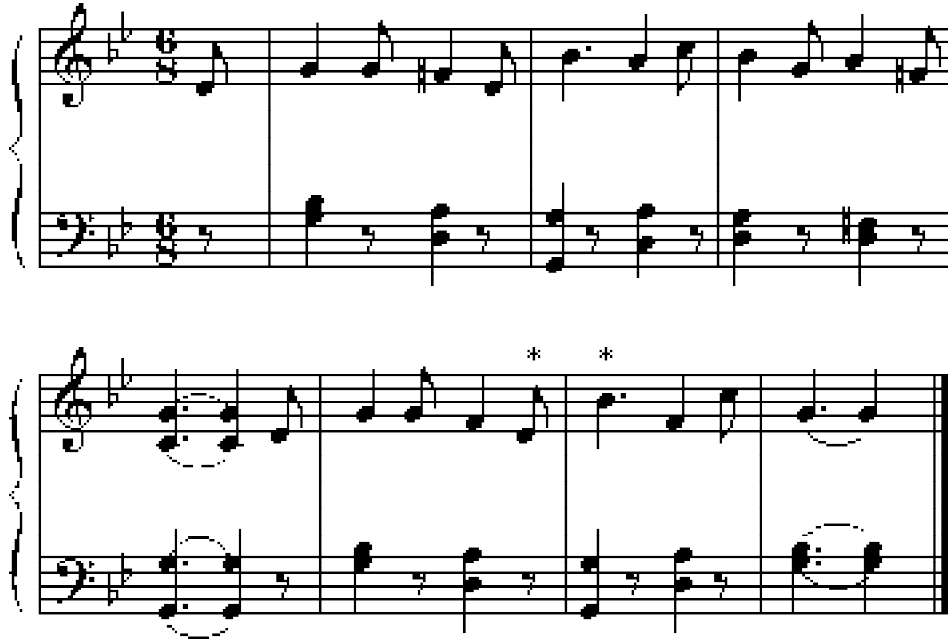
31. Construct the following scales with minims. Use key signature and necessary accidentals.

$5 \times 1 = 5$

- D natural minor, descending, bass clef.
- A melodic minor, ascending, bass clef.
- B harmonic minor, descending, treble clef.
- E melodic minor, descending, bass clef.
- G melodic minor, descending, treble clef.

32. Look at the following music and answer the questions that follow.

5x1=5



- a) Identify the key the piece is in.
- b) Name the type of cadence that ends this piece.
- c) What is the interval between the two notes marked (*) in bars 5-6?
- d) Is this piece in simple or compound time?
- e) What is the total number of counts for the notes in the last bar?
