

2022
CLASS – IX (Phase-II)
SCIENCE

Total marks : 40

Time : 1½ hrs

General instructions:

- i) *Approximately 10 minutes is allotted to read the question paper and revise the answers.*
- ii) *The question paper consists of 16 questions in 5 categories.*
- iii) *Internal choice has been provided in some questions.*
- iv) *Alternate question for the visually impaired students are provided in questions 12 & 13. **Only the visually impaired students have to attempt such alternate questions.***
- v) *Marks allocated to every question are indicated against it.*

N.B: *Check to ensure that all pages of the question paper are complete as indicated on the top left side.*

1. Choose the correct answer from the given alternatives:

- (a) Which of the following is an aqueous solution? **1**
- | | |
|--------------------------------|-------------------------------------|
| (i) Sulphur in carbon dioxide | (ii) Iodine in carbon tetrachloride |
| (iii) Sodium chloride in water | (iv) Iodine in alcohol |
- (b) Intercalated discs are found in **1**
- | | |
|---------------------------|----------------------------|
| (i) striped muscle fibres | (ii) cardiac muscle fibres |
| (iii) nerve cells | (iv) ligaments |
- (c) A moving bus when stopped suddenly, the passengers will **1**
- | | |
|-------------------------|-----------------------|
| (i) move forward | (ii) move backwards |
| (iii) remain stationary | (iv) move to the side |
- (d) A bomb is released from an aircraft. Its trajectory is **1**
- | | |
|--------------------------|---------------------|
| (i) a straight line | (ii) a zig-zag path |
| (iii) an arc of a circle | (iv) a parabola |
- (e) Sound travel best in which medium? **1**
- | | |
|-----------|-------------|
| (i) Solid | (ii) Liquid |
| (iii) Gas | (iv) Vacuum |

Answer the following questions in one word or one sentence:

2. What is ductility? **1**
3. Define the term 'tissue'. **1**
4. State Archimedes' principle. **1**
5. What are the frequencies range associated with infrasound? **1**

6. What are draught animals? 1

Answer the following questions in about 20-30 words:

7. Write the valencies of chlorine and neon. 2

8. Write one function each of xylem and phloem. 2

9. Why will a sheet of paper fall slower than one that is crumbled into a ball? 2

10. Give any two management practices that take place in dairy farming. 2

Answer the following questions in about 40-60 words:

11. What is a colloid? Give two properties of colloid. 1+2=3

12. Draw the structure of neuron and label it. 3

Alternate question for the visually impaired students:

Where is stomata found? Give two functions of stomata. (1+2=3)

13. a. A person has a hearing range from 20 Hz to 20 kHz. What are the typical wavelengths of sound waves in air corresponding to these two frequencies? Take the speed of sound in air as 344ms^{-1} .

Or 3

b. A stone is dropped from the top of a tower 500m high into a pond of water at the base of the tower. When is the splash heard at the top? Given, $g= 10\text{m/s}^2$ and speed of sound = 340m/s.

Alternate question for the visually impaired students:

What are wavelength, frequency and time period of a sound wave? (3×1=3)

14. a. List three disadvantages of using fertilizers.

Or 3

b. Differentiate between capture fishing, mariculture and aquaculture.

Answer the following questions in about 70-100 words:

15. a. Describe Rutherford's model of an atom. Write any one drawback of Rutherford's model of atom. 5

Or

b. What is atomic number and mass number? Give three uses of isotopes. (2+3=5)

16. What is inertia? Explain two types of inertia. Give two examples in daily life which shows inertia. 1+2+2=5

2022
CLASS – IX(Phase-II)
ENGLISH

Total marks : 40

Time: 1½ hours

General instructions:

- i) *Approximately 07 minutes is allotted to read the question paper and revise the answers.*
- ii) *All questions are compulsory.*
- iii) *The question paper consists of 9 questions, divided into Units I, II, III and IV.*
- iv) *Internal option is given in some questions.*
- v) *Marks allocated to every question are indicated against it.*
- vi) *Alternate question for the visually impaired students are provided in question 7. **Only the visually impaired students have to attempt such alternate questions.***

N.B : *Check that all pages of the question paper is complete as indicated on the top left side.*

UNIT – I (Literature)

Answer the following questions:

1. How have the Americans simplified the English language? Give examples. (Toasted English)

Or **3**

What kind of a man was Ebenezer Scrooge? What were his views on Christmas?
2. What is Chief Seathl's belief regarding the ownership of land?

Or **3**

'All things are connected'. In what context does the Chief say this?
3. **Answer either 3(i) or 3(ii)** **5**
 - (i) **a.** Read the lines and answer the questions that follow:

*Till the little ones weary
No more can be merry;
The sun does descend,
And our sports have an end.*

 - (i) What are the children doing? (1)
 - (ii) What time of the day is it? (1)
 - (iii) How has the mood of the poem changed? (2)
 - (iv) What part of the cycle of life is it? (1)

Or

 - b.** To what are old age and youth being compared to in the poem, 'The Echoing Green'. (5)
- (ii) Give the summary of the poem 'Mirror'. (5)

UNIT – II (Reading)

4. Read the passage given below and answer the questions that follow:

Substance addiction is a serious problem these days. Vast number of people around the world suffers from substance abuse problems such as alcohol, marijuana, drugs or any other intoxicating substance. Substance addiction is a disease that affects the person's brain and behavior and leads to an inability to control the use of legal or illegal drug or medication. Many people start taking drugs as an escape from their painful reality. Others take drugs just to experience how it feels. Whatever be the reason, before a person knows, one becomes addicted to it and becomes hard to get rid of this addiction. Short term pleasure caused by it can lead to serious long term problems.

It can cause severe health issues and behavioral changes. Some of the symptoms of drug addiction includes loss of appetite, aggressive behavior, loss of self control, change of social circle, anxious behavior etc. Many people argue that overcoming addiction just requires will power and determination. However, that is not so. It requires much more. Drug addiction alters the brain and causes powerful cravings. Will power alone cannot help overcome this strong urge. It is essential to seek professional help and take proper medication and treatment in order to get rid of drug addiction.

- i) Answer the following questions:
 - a. What is substance addiction? 1
 - b. Why do people begin to take drugs? 1
 - c. Name three symptoms of drug addiction. 1
 - d. How can one overcome drug addiction? 2

- ii) Find words in the passage that has the same meaning as: 3x1=3
 - a. within the law
 - b. intense desire
 - c. make changes

5. Read the poem carefully and fill in the blanks:

Love came to Flora asking for a flower
That would of flowers be undisputed queen,
The lily and the rose, long, long had been
Rivals for that high honor. Bards of power
Had sung their claims. 'The rose can never tower
Like the pale lily with her Juno mien' -
'But is the lily lovelier?' Thus between
Flower-factions rang the strife in Psyche's bower.
'Give me a flower delicious as the rose
And stately as the lily in her pride' -
But of what color?' - 'Rose-red,' Love first chose,
Then prayed - 'No, lily-white - or, both provide;'

And Flora gave the lotus, 'rose-red' dyed,
And 'lily-white' - the queenliest flower that blows.

(Toru Dutt)

Fill in the blanks and complete the summary of the poem:

8x¹/₂=4

The God of flower comes to _____ asking for the most beautiful flower in the world. For a long time, the lily and the rose had been _____ for the high honour. The flower _____ engaged in their _____ sitting under the psyche's _____. Love wanted for a flower which was _____ as the rose and as _____ as the lily. Then, Flora gave _____ flower and resolved the long standing quarrel.

UNIT – III (Writing)

- 6. Write a paragraph in about 80-100 words on 'Healthy Lifestyle' using the inputs given:

Healthy diet-more fruits-enough water-more vegetables-daily exercise-enough sleep-reduce stress-no junk food -bad habits- smoking, alcohol, drug abuse- have a positive mind

Or

4

Write a paragraph on 'Respect for Elders' in 80-100 words.

- 7. Based on the visual input given below, write on 'Global Warming-the greatest threat' in about 120-150 words.

5



Alternate question for the visually impaired students. ONLY the visually impaired students should attempt this question.

Based on the inputs given below, write on 'Environmental pollution' in about 120-150 words.

(5)

Serious impact-environmental pollutants-problems for humanity-leading factor for climate change-disrupt ecosystem-fatal for the human race.

UNIT – IV (Grammar)

8. Rewrite the given sentences as directed in the brackets: **3x1=3**
- (a) I have never been to England.(State the Tense)
 - (b) After you return from school, you'll like to take some rest. (Underline the dependent clause)
 - (c) I travelled to India to study the Indian culture. (State whether the underlined verb is finite or non-finite)
9. Transform the following sentences as directed: **5x1=5**
- (a) He said to me, “You have to go to school.” (Change into Indirect Speech)
 - (b) Mani asked whether he could go for a walk in the nearby park. (Change the sentence into Direct Speech)
 - (c) The rules should be obeyed. (State whether the given sentence is in Active or Passive Voice)
 - (d) The new book will be published by Headword next year. (Change into Active Voice)
 - (e) The burglar buried the treasure. (Change into Passive Voice)

2022
CLASS-IX (Phase-II)
MATHEMATICS

Total marks : 40

Time : 1½ hours

General Instructions:

- i) Approximately 8 minutes is allotted to read the question paper and revise the answers.
- ii) The question paper consists of 11 questions.
- iii) All questions are compulsory.
- iv) Internal choice has been provided in some questions.
- v) Marks allocated to every question are indicated against it.

N.B: Check to ensure that all pages of the question paper is complete as indicated on the top left side.

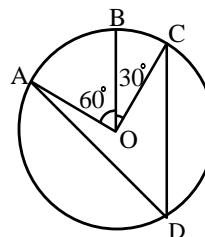
Section - A

1. Choose the correct answer from the given alternatives.

- (a) The edges of a surface are 1
(i) lines (ii) curves (iii) points (iv) none of these
- (b) Two supplementary angles differ by 30° . The angles are 1
(i) $70^\circ, 100^\circ$ (ii) $75^\circ, 105^\circ$ (iii) $80^\circ, 100^\circ$ (iv) $50^\circ, 130^\circ$
- (c) In $\triangle ABC$, if $AB = AC$ and $\angle A = 80^\circ$, then the values of $\angle B$ and $\angle C$ respectively are 1
(i) $50^\circ, 60^\circ$ (ii) $50^\circ, 50^\circ$ (iii) $40^\circ, 40^\circ$ (iv) $80^\circ, 50^\circ$
- (d) Total surface area of a hemisphere is 462 cm^2 . Its curved surface area is 1
(i) 231 cm^2 (ii) 300 cm^2 (iii) $300\pi \text{ cm}^2$ (iv) 308 cm^2

Section – B

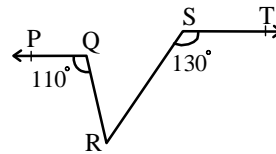
2. In the adjoining figure, A, B and C are three points on a circle with centre O such that $\angle BOC = 30^\circ$ and $\angle AOB = 60^\circ$. If D is a point on the circle other than the arc ABC, find $\angle ADC$.



3. Find the total surface area of a cone, if its slant height is 21 m and diameter of its base is 24 m. 2

Section – C

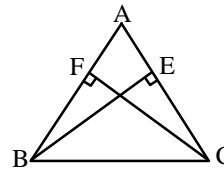
4. **a.** In the adjoining figure, if $PQ \parallel ST$, $\angle PQR = 110^\circ$ and $\angle RST = 130^\circ$, find $\angle QRS$.



Or

3

- b.** It is given that $\angle XYZ = 64^\circ$ and XY is produced to point P . Draw a figure from the given information. If ray YQ bisects $\angle ZYP$, find $\angle XYQ$ and reflex $\angle QYP$.
5. **a.** In the adjoining figure, ABC is an isosceles triangle in which altitudes BE and CF are drawn to equal sides AC and AB respectively. Show that these altitudes are equal.



Or

3

- b.** ABC is an isosceles triangle with $AB = AC$. Draw $AP \perp BC$ to show that $\angle B = \angle C$.
6. If the diagonals of a parallelogram are equal, then show that it is a rectangle.
7. **a.** A hemispherical bowl made of brass has inner diameter 10.5 cm. Find the cost of tin-plating it on the inside at the rate of ₹ 16 per 100 cm^2 .

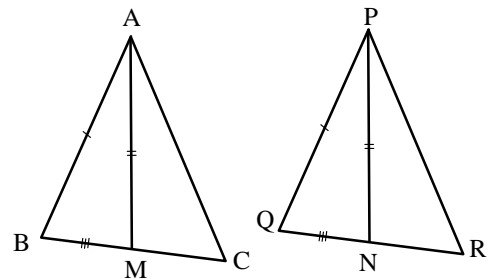
Or

3

- b.** Find the capacity in litres of a conical vessel with height 12 cm and slant height 13 cm.

Section – D

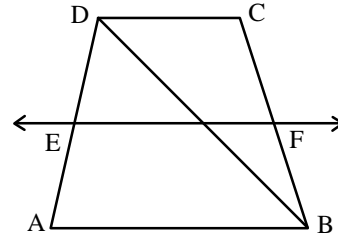
8. **a.** In the adjoining figure, two sides AB and BC and median AM of one triangle ABC are respectively equal to sides PQ and QR and median PN of $\triangle PQR$. Show that:
 (i) $\triangle ABM \cong \triangle PQN$
 (ii) $\triangle ABC \cong \triangle PQR$



Or

5

b. In the adjoining figure, ABCD is a trapezium in which $AB \parallel DC$, BD is a diagonal and E is the mid-point of AD. A line is drawn through E parallel to AB intersecting BC at F. Show that F is the mid-point of BC.



9. a. Prove that the angle subtended by an arc at the centre is double the angle subtended by it at any point on the remaining part of the circle.

Or

5

b. If the non-parallel sides of a trapezium are equal, prove that it is cyclic.

10. a. A cloth having an area of 165 m^2 is shaped into the form of a conical tent of radius 5m.

- (i) How many students can sit in the tent if a student on an average occupies $\frac{5}{7} \text{ m}^2$ on the ground?
 (ii) Find the volume of the cone.

Or

5

b. Twenty seven solid iron spheres, each of radius r and surface area S are melted to form a sphere with surface area S' . Find the

- (i) radius r' of the new sphere (ii) ratio of S and S' .

11. a. The following table gives the life times of 400 neon lamps:

Life time (in hours)	Number of lamps
300 – 399	14
400 – 499	56
500 – 599	60
600 – 699	86
700 – 799	74
800 – 899	62
900 - 1000	48

- (i) Represent the given information with the help of a histogram.
 (ii) How many lamps have lifetime more than 800 hours.

Or

5

b. Consider the marks, out of 50, obtained by 60 students of a class in a test, given in the following table:

Marks	0-5	5-10	10-15	15- 20	20-25	25-30	30-35	35-40	40-45	45-50
No. of students	6	10	5	7	8	4	3	3	4	10

Draw a frequency polygon for the data above (without constructing a histogram).

2022
CLASS – IX (Phase-II)
SOCIAL SCIENCES

Total marks : 40

Time : 1½ hours

General instructions :

- i) Approximately 8 minutes is allotted to read the question paper and revise the answers.
- ii) The question paper consists of 13 questions. All questions are compulsory.
- iii) Internal choice has been provided in some questions.
- iv) Alternate question for the visually impaired students are provided in questions 1(b) & 12. **Only the visually impaired students have to attempt such alternate questions.**
- v) Marks allocated to every question are indicated against it.

N.B: Check that all pages of the question paper is complete as indicated on the top left side.**1. Choose the correct answer from the given alternatives:**

- (a) When did the Second World War come to an end? **1**
- | | |
|------------|-----------|
| (i) 1939 | (ii) 1945 |
| (iii) 1946 | (iv) 1947 |

- (b) Identify the leader who said, "Freedom is my birth right and I shall have it"? **1**



- | | |
|---------------------------|------------------------|
| (i) Lala Lajpat Rai | (ii) Mahatma Gandhi |
| (iii) Bal Gangadhar Tilak | (iv) Bipin Chandra Pal |

Note : This question is in lieu of Q 1.(b) for visually impaired candidates only.

- (b) The slogan "Do or Die" was given to the nation by **(1)**
- | | |
|------------------------|---------------------|
| (i) Bhagat Singh | (ii) V.D. Savarkar |
| (iii) Rash Behari Bose | (iv) Mahatma Gandhi |
- (c) In which of the following state is the Sundarban bioreserve located? **1**
- | | |
|-----------------|------------------|
| (i) Assam | (ii) West Bengal |
| (iii) Meghalaya | (iv) Tamil Nadu |
- (d) When were the Fundamental Duties added to the Indian Constitution? **1**
- | | |
|------------|-----------|
| (i) 1970 | (ii) 1972 |
| (iii) 1974 | (iv) 1976 |
- (e) Food is distributed at subsidised prices through **1**
- | | |
|-----------|----------|
| (i) MMS | (ii) PPS |
| (iii) PDS | (iv) NPP |

Answer the following questions in one word or one sentence not exceeding 15 words:

2. What is the importance of colour in a map? **1**
3. Name the two Houses of Parliament. **1**

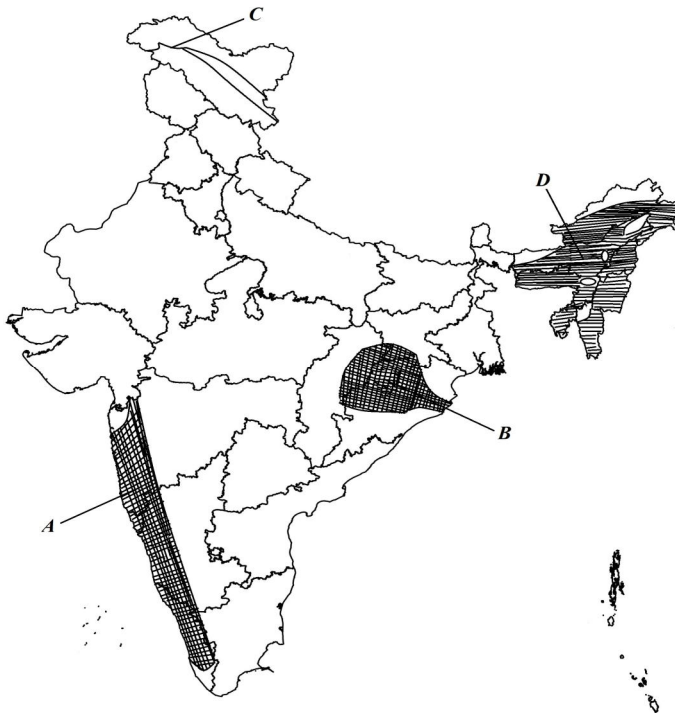
- 4. What is poverty line? 1
- 5. Define unemployment. 1
- 6. What is human capital? 1

Answer the questions in about 20-30 words:

- 7. Which Act gave Hitler complete power in Germany and when was this Act passed? 1+1=2
- 8. Differentiate between a Money Bill and an Ordinary Bill. 2
- 9. Briefly explain the terms (a) Habeas Corpus and (b) Mandamus 1+1=2

Answer the questions in about 50 -70 words:

- 10. **a.** Write a note on the Ganga System. 4
Or
b. Why have biosphere reserves been set up?
- 11. **a** What is meant by food security? Explain three components of food security. 1+3=4
Or
b. Explain the positive relationship between population growth and economic development of a country. (4)
- 12. On the given political map of India, four features A, B, C, D have been indicated. Identify these features with the help of information mentioned below and write their correct names against their letters. 4
 - i) Mahanadi basin
 - ii) Indus river
 - iii) Tropical deciduous Forests
 - iv) Tropical rain forests



Note : This question is in lieu of Q. 12 for visually impaired candidates only.

12. (i) What is a water shed? 1
(ii) Which river is also known by the name 'Dakshin Ganga'? 1
(iii) Which are the most widespread forests in India? 1
(iv) How many biosphere reserves are there in India? 1
13. Answer **any two** questions in about 80 – 100 words. **2x6=12**
- (a) Describe the main features of the Quit India movement. (6)
(b) Briefly discuss the steps taken to hold elections. (6)
(c) Mention any six Fundamental Rights. Explain any one. (3+3=6)

2022
CLASS-IX (Phase-II)
TENYIDIE

Total marks: 40

Time: 1½ hours

General instructions:

- i) *Approximately 8 minutes is allotted to read the question paper and revise the answers.*
- ii) *The question paper consists of 13 questions. All questions are compulsory.*
- iii) *Internal choice has been provided in some questions.*
- iv) *Marks allocated to every question are indicated against it.*

N.B: *Check that all pages of the question paper are complete as indicated on the top left side.*

(Thedze kezo)

1. Hanie puo (1) kedapie dieca krie puo nunu krie di hiepengou (100-150) mese nunu thushülie.

- a. Dzeyieleshü puo thupie n zeu/zepfü tsü di no khoutho chuti teiu nu kimhie di n krünuo khruohishü shikecü dze thushülie. **6**

Moro

- b. Chatha khapie kebau medzi di thedzeu mu puo caü-u sa thushülie.
Teile teiki puo nhie...shüzha puo terhü seta...dzü pfhü lukihaki vo...rünyo lipfü puo ngulie...dzü keduoyopuo rübei keba ngulie...ketsieko kepapie lipfhüu nu shüşhü...krielie di pruota.

2. Hanie puo (1) kedapie dieca hiepengou (50) mese nunu thushülie. **4**

- a. Noe Beituo/Beinuo, Milestone School, Phek nu noe leshükephrünuoko krotho krütäu, N leshüki nu khunhie Mechü Mhaze puo pebatuouü ükezhü se Kelieshie (advertisement) puo thushülie.

Moro

- b. Noe seluoba nunu n rakabou pejükewa la kepesikeshü puo thupie thedzeleshü nu khashülie. Rakabou rhiu mu morokesuoko sa thushülie.

(Diezho mu Thuyie)

3. Die puotou-u kedapie thushülie:

5x1=5

- a. Puo phi luki tha di _____.
- | | |
|----------|----------|
| i. pfhür | iii. vor |
| ii. phir | iv. ler |
- b. A leshüki nu vo.'Vo' hau pfhephra kiu nu ba ga?
- | | |
|--------|-------------|
| i. puo | iii. pengou |
| ii.se | iv. dia |
- c. Chü seiyakecü dze se pesikeshü _____ .
- | | |
|----------|-------------|
| i. putuo | iii. puzhie |
| ii.puya | iv. pute |
- d. Puo suo ba süla vor mote.Diecha hau nu dieca kiu diekhe ga?.
- | | |
|---------|---------|
| i. süla | ii. vor |
| ii.suo | iv. puo |
- e. No n phikou khrüliete _____ ?
- | | |
|-------|---------|
| i. ma | iii. mu |
| ii.me | iv. ga |

4. Dieca ‘shü’ hau se diemei mu puoca kenyi idi tha kekreshülie. 1+1=2
5. Diekhe ‘bu’ hau se diecha chüshülie. 1
6. Dieca puokru tou-u pie rhiiephi (-) kesedo thashülie. 1
 _____ pu seilie morosuo.
7. Diecha hau pie Tenyidie nu thushülie: 1
 a. Please wash your clothes.

(Diemvü)

8. Diecako donu puotou-u kedashülie: 2x1=2
- (a) Supuoe mia rava mie kezivi khrüpie puo rütso chütuoya ga?
 (i) Whecha (iii) Sanyühu
 (ii) Roviü (iv) Ngusanyü
- (b) “Si mo di kesi khravü rei hie”. Geizo kiu nunu dze par ga?
 (i) N dzüzei hie
 (ii) No kevitho-u
 (iii) Leliecie
 (iv) Keliya zolie

Ketsokecü hanie dieca 20-25 mese nunu kelashülie: 2x2=4

9. Lougakrü za ketho-u ki üsi ga? Kedipuo la puo melou suo seta ga?
 10. ‘Keliya zolie’ geizo-u nu kiüdi mhakejü la u nou mezhie morei vi üdi pu ga?

Ketsokecü hako dieca 40-50 mese nunu kelashülie: 1x4=4

11. a. Kedipuo la Roviü puo chügei kenyü mota ga? Puo chüdi geilie rei kenyü moketa la mia kedipuo pu tuoya ga? (2+2=4)

Moro

- b. “Kediu die hako silie tse hapfhüishü di mhakesiko kie la di uko ki,”.
 i. Kediu sü supuo pu ba ga? (1)
 ii. Mhakesiko ki kedipuo pushü ga? (3)

Ketsokecü hako dieca 60-90 mese nunu kelashülie: 2x5=10

12. a. Mhalelie-e tekhu-u geiketuo la kedipuo rhüshü ga? Themou-u kikemhie di tekhu-u geilie nu pushü ga? We kikidi mha kere penyülie vi ga? (2+2+1=5)

Moro

- b. “Kedikechüki nu unie khoukoyo chüwatie shi ba di tekhou chü tseishü mu tata”.
 i. Roviü thenu liekelie sie kedipuo kemhieta ga? (2)
 ii. Kedipuo la Roviü kimia tata ga? (2)
 iii. Roviü puo kimia tata tse kikemhieta ga? (1)
13. Pu kezhüra pukeshüü rei,
 Mhale kemo si tso kemo-u
 Le tso mo di n die se kesuo,
 Keta ki rei no we prüli hie.
 i) Diecha hako geizo kiu nunu se par ga? (1)
 ii) Supuo geizo hau zoshü ga? (1)
 iii) Geizo diecha hako puoca vatshashülie. (3)

2022
CLASS-IX (Phase-II)
AO

Total marks: 40

Time: 1½ hours

General instructions:

- i) *Approximately 8 minutes is allotted to read the question paper and revise the answers.*
- ii) *The question paper consists of 13 questions. All questions are compulsory.*
- iii) *Internal choice has been provided in some questions.*
- iv) *Marks allocated to every question are indicated against it.*

N.B: Check that all pages of the question paper are complete as indicated on the top left side.

(Olem)

1. Agüja aliba onük aser arrla amshia ojang 100-150 shi nung shiti ka züluang: 6

- a. Na jila nung hostel nung lia azünger. Nebu dangi küm tatembang tatidang agütsütsü atema na koma renema lir iba indang shia züluang.

Mesüra

- b. Agüja aliba arrla amshia otsü ka züluang aser teputep nüngka aser mulungdang agüjang:
Keyi kati jepju ka mezüngmeshi-ngusettsü ta ashi- shiruru ajak madak chuba ta mezümeküm-jepjüi manganü- Na ajak madak - chuba masü- nai makokba aika lir- nisungang chuba- keyi ain adok- ngusettsü anasai aru- jepjüi pa ayei tezüng kaloktsü- temang sünga tsüngoktsü- tenük külen toreptsü- aser la meyong lungkii ai.

2. Agüja aliba arrla amshia ojang 50 shi nung züluang: 4

- a. Na aliba tesem nung nai para ki tajung ka renemteta lir. Anungji para ki nüngdaka bushirtem atema maongka agiang ta osang kaket nung nüngdakba ajak shia sangdong ka zülur adokdakjang.

Mesüra

- b. Na lokti nung tanishir ka. Ner lokti küm tatembang buba lokti mensem alitsü nübur nem metetdakja sangdong ka züluang.

(Orrlem)

3. Agüja aliba nungi telangzüba shitak shimtetang: 2x1=2

- a. Zülüjang balala shia tetezü aketba ojang adokdakja amentepba dang _____ ta ajar.
i. örülem ii. zülüjang iii. oren iv. zülumen
- b. 'Tajung Tsüngremi neneok moajang ma' koba orenlem?
i. Takhang ii. Mallem iii. Tasüngdangba iv. Imoshi

4. Itemi langzüang: 3x1=3

- a. Aya! Pa mejüangi yiruogo. (Kobala orenlem nung tena lir)
- b. Nenok yangnungi aenshia oang. (Kobala orenlem nung tena lir)
- c. Orülem teratet züluang

5. Item nungi shitak zülumen shimtetang: 3x1=3

- a. Lanurtemi tim (libaliro/libaliru) benshitsüla.
- b. Temenen (tanela/tanüla) kati pa kangshir.
- c. Tetsür tanur kolak nung (meim/meyim)

6. Item oren Aoi meyizükang: 2x1=2

- a. Days are longer in summer.
- b. We go to school every day.

(Otsü aser Sangro)

7. Agüja aliba nungi shitak telangzüba shimtetang:

3x1=3

- (a) Lanuri pei tsürabur akhüm tsübubaji awashi metetba _____ jenjang lir.
 - (i) tematiba
 - (ii) tulutiba
 - (iii) tajungtiba
 - (iv) tajemtiba
- (b) School tanurtem ajaki pei azüingba kakat rijju _____.
 - (i) anepalutsüla
 - (ii) meimtsüla
 - (iii) yaritsüla
 - (iv) sempatsüla
- (c) Tongpang akok ken tena _____ soyim limai.
 - (i) arutsü
 - (ii) meyiptsü
 - (iii) reprangtsü
 - (iv) shilangtsü

Agüja aliba ojang 20-25 tashi nung langzüang:

4x2=8

- 8. School nung mapang shitak mamshiba takoksatenji kechisa?
- 9. Shirmoki aser kodang Ao lima nung khristar arogo tenzüka züina ao?
- 10. Sangro mejemeri Ao milen ya Impur ta kechiba ashi?
- 11. Komala nisung den tembar mayimtsüla?

Item tasüngdangbatem ya 40-50 tashi nung langzüang:

- 12. a. Awashi tzüpokdak tajungtibaji kechi? Kuli kar agüjang.

1+3=4

Mesüra

- b. Anembong tetezü kechi dang ajar? Anembong raksara kechi ataloker?

(2+2=4)

Item tasüngdangbatem ojang 60-90 tashi nung langzüang:

- 13. a. 'Ozü Ao tenem nungi

Akhang, Ao semersanger

Par engraji pukhümi

Ozü ongtrok putisü

Ulutsü mesasa

Yok, wabong tajung tesa.'

- i. Koba sangro nungi?

1

- ii. Shibai zülu?

1

- iii. Tekongji rajema züluang?

3

Mesüra

- b. "Na limaneptsü mozübenla au, nai agütsür tsüngchi tepela."

- i. Koba sangro nungi?

(1)

- ii. Shibai zülu?

(1)

- iii. Mozübenla ji shiba

(1)

- iv. Oren jagi kechi ashir züluang.

(2)

2022
CLASS-IX (Phase-II)
SUMI (SÜTSAH)

Total marks: 40

Time: 1½ hours

General instructions:

- i) Approximately 8 minutes is allotted to read the question paper and revise the answers.
- ii) The question paper consists of 13 questions. All questions are compulsory.
- iii) Internal choice has been provided in some questions.
- iv) Marks allocated to every question are indicated against it.

N.B: Check that all pages of the question paper are complete as indicated on the top left side.

(Iqikulu)

Atsathi 100-150 words dolono yelo:

1. a Oküsau Vili/Vito no asheta thekuju yekala 10 (chighi) lo akinishi tolu keu ghenguno toshe tsükeu eno nono amulo kiqi shiakeu yekili pa/li lau yelho. **6**

Momu

- b. Küghakiche ghili nono ithi keu lakhi yelho.

Atsathi 50-60 dolono lakhi yelho:

2. a. No no itimi ghili-a akithe khaqi pe ani. Ike, itimiqo müsü keu kiye shipesü kiyephi lo sükeu kiye lakhi yelho. **4**

Momu

- b. No ye Avito/Avili, ike no kiphia lo nono akiyeu shiani kehu, akiphiki hokümxa mithe veni ke; kiphimqo khumo vezümono ighilo kikeu kiye lakhi shipe külha keu shilo.

3. Achipiu tsathi pe kimeve tsülo:

2x1=2

- a. Niye alu _____ ani.
 - i. mla
 - ii. ghe
 - iii. pugho
 - iv. chu
- b. Anga ye kushiye _____ ani kea?
 - i. ka
 - ii. qa
 - iii. kha
 - iv. qha

4.Sütsah lo pepide süvelo:

3x1=3

- a. There are seven days in a week.
- b. Who is going to live in that house?
- c. Oh! What a beautiful flower.

5. Atsajo yepüa keu lo aje atüghiu (subject) aje akineu (object) hephokütsüu kütüta shi kimichive tsülo.

2

‘Panongu ye khuhebo kive ani.’

6. Hi yepüa keu lo timi atüghiu, akiniu eno aküthüu michipheve tsülo:

1

‘Ni ye li ghengu no shikükau vilo pitsü.’

7. Ngomichi achipi lono süve tsülo:

2x1=2

- a. No ye khuno ghami kea
- b. Aha ta kushilo pimona

(Kichitssathoh eno Apu Asü Leshe)

8. Achipiu tsathi pe kimeve lo:

2x1=2

(a) Akithi ajeli _____ ani.

- (i) tsüni
- (ii) tache
- (iii) toku
- (iv) tsügho

(b) Khümütsah papuh je ye _____.

(i) Itepu

(iii) Kivigho

(ii) Chisahu

(iv) Pitheli

Atsathi 20-25 dolono khochilelo

2x2=4

9. Akithi chine ajeli khijehi ani kea? Aje yehlo.

10. Küghato sükhai ye kiu mpe lono khile no punu kea? Papuh-aza je petsü lo.

Atsathi 40-50 dolono khochilelo:

1x4=4

11. a. Kichimi khuaye lo akumo qhoni kelo amoshou no amla shou kibe wuti küghape achine shino akumo chupe che. Ti akumo kuqho tsala lo atsü eno awo heqhi keu pe ‘Akhosü’ ipi cheni.

Akumo qhowo ‘küthü chow’ amemüha cheni.

i. Amoshou ye kuu piani kea? (1)

ii. Kuu pea chine shino akumo chuche kea? (1)

iii. Kuu shikeu pe akhosü ipi cheni kea? (1)

iv. Küthüchow kiqu ye kuu kea? (1)

Momu

b. Ayeghü lakhülo alu chilu peayewo,

Alu chilu pemoyewo

Aluba lupe ani hoishe,

O ilomüka kulhoshi ghi.

Leshe hipau akiqi hepho tsülo.

Atsathi 60-90 dolono khochilelo:

12. a. Nasainagha limino okinimo aye,

Alhe ghopusü kithimi ghuno,

Kivilo hu ale phewo losüqhiyi wolo,

Aküxüno atsa kuto chena, kithi pumi ye ala kühauye.

Leshe hipau akiqi hepho tsülo.

5

Momu

b. Küghato sükhai iti lo xü ghili nono phikulu lono ithi keu apasü shi yehlo.

13. Timi no khumutsah Amighiu tsütsangü shi thaigha anamu, Tüghünakha ye Amighiu philo

kükümgha akeu ithino khumutsah ju alo ache. Pama achuwa quwu kelo khumutsah no achuwa ki

lono all sünhephe aye athi au lo dabeı sünhephe eno azü kuchu kelo tüghünakha no Amighiu

kiche nutsü aye athi nuphelu ishi keu lono alau shi khumutsah ju azükini shiueve ke.

i. Tüghünakha ye Amighiu philo kuu ithulu kea? **1**

ii. Timiqo ye kishi Amighiu thaigha kea? **1**

iii. Pama ye kuu shiwu kea? **1**

iv. Kishi kelono au lo athi dabeı sunhephe kea? **1**

v. Tüghünakha no akitchu nutsü kelo kuu nuphelu kea? **1**

2022
CLASS-IX (Phase-II)
LOTHA

Total marks: 40

Time: 1½ hours

General instructions:

- i) *Approximately 8 minutes is allotted to read the question paper and revise the answers.*
- ii) *The question paper consists of 14 questions. All questions are compulsory.*
- iii) *Internal choice has been provided in some questions.*
- iv) *Marks allocated to every question are indicated against it.*

N.B: Check that all pages of the question paper are complete as indicated on the top left side.

(Eramo)

1. Oküpoe pi elio shiang lona motsünga ethüngi yitsüng 100-150 harüma na erana.

- a. Nchüküm nzyu 2022 10 limhatsu thüktüng nshütav sala hoji tsükona merangta jilo ni chokao meta kyon ocho okho ni chokata sana hojiang meta ekyo erong piv tsükona nishom ocho Dimapuri vancho sana ji thüngi yiyenta kako erana. **6**

Mekana

- b. Motsü erana

Oküpoe etsyuchi pi elio ji ephani na yitong theta motsü erana:

Furo eni vancho - oso lumchak motsünga hüngcho oni khontacho. – yakso ji thüngi wotacho – mmhom nsüngtokvü tsükona – yakso jina khichoyicho - Ombona oso ji kheti füsoyiv ezochoch - oso ji seri jilo ekachücho – ekyongo ji ombo na nkükchoe tsocho – elan elani ombo na nkükchocho, oso ji thümi sicho- Furo eni jina engathe khopicho.

2. Oküpoe pi lio shi onilo motsünga ethüngi yitsüng 50 harüma na ethako erana. **4**

- a. Ntsijanta yilan:

Nino nte yani pongdenro kipvülen ji osi nte yan jilo omi wondang mhonkata tsütsatav tsukona omi eze ethev lia to yithen kako lo kvüto ntsijantav sana erana.

Mekana

- b. Ntsitayi:

Nino nte khaphen jilo eranpvüi ejoe na nte khaphen jilo pungnoe tsüngon (Teachers' Day) müngyanchi elhilan ji Nrüngtsü motsünga lona benkav ka to nte khaphen jilo ekhae topvüna rotale to ntsita erana.

(Yinsanlan)

3. Janlan pi elio jiang lona elamo ji ethüngi erana: **2x1=2**

- a. Ombo zhüvae _____ (Etsukayi elamo ji khi pyingtoka)

- i. ji iii. nchyua
- ii. motsünga iv. tsüka

- b. Shijo a echi. (Yintup kümtoka)

- i. Shi jo a echi meka iii. Shi jo a echi mekla
- ii. Shi jo a echi mek iv. Shi jo a echi mekcho

4. Yitsüng shiang yichak ji ntio sana erana: **2x1=2**

- a. Oyam emhi b. Shiali kvü

5. Yiren shiang engao kümtoka: **2x1=2**

- a. Ombona kongken yenala.
- b. Ombo shilo nvan.

6. **Yiren shiang na ovon tongphi erana.** **2x1=2**
 a. Kako mmhon motsünga jo ana khacho. (etssoe von kümtoka)
 b. Ochi na ha owon nzo. (yirüo von kümtoka)

7. **Yiren shiang Lotha yi na khophia:** **2x1=2**
 a. Jesus saves.
 b. I hardly know him.

(Erantolan)

8. **Engao shiang akvülo elamo ji ethügi janlana:** **3x1=3**

- (a) “Sümro khyingroe vüjavü” yiren shilo vajavü to ephyo jijo.
 (i) etho ejüi (iii) ovüngeli
 (ii) rütsolo thüngche (iv) ntsinrang ozen ekhying
- (b) Chüng yi “Tiyi Enüng” eranpvui jina Tiyi Enüng ji thüngi ntio chonchola?
 (i) Liko lizü (iii) Worowoni
 (ii) Epyingeli (iv) Tathi sen ji
- (c) Lotha na etsüi ntokdemo ji jo.
 (i) British assistant political agent.
 (ii) Deputy Commissioner Sibsagar.
 (iii) Captain T, Brodie.
 (iv) Lieutenant H, Bigge.

- Oküpeo engao shiang yitsung 20-25 harüma na janlana:** **4x2=8**

9. Khyingroe jina kvütolyui Lijao ki chivocho la? Lijao otsolov nchyu kvüta vancho la?
 10. Osüm jiang na ete thüngi ori etsov tsükona kvütolyui rocho la.
 11. Phyophen jo ephyo jijo ntio la? Hanjüng jo ntio la?
 12. Tiyi enüng omotsü kongo phonglan shijo limatsü na jo kvüto tsala? Tiyi yenjoe evanden oyan mying mezhü erana.

- Oküpeo engao shiang yitsüng 40-50 harüma na janlana:** **1x4=4**

13. a. Nkolo ete Lotha tona osüm to shishota ero ji ni engathe ephani na erana.

Mekana

- b. Yitsüng pi elio jiang yichak erana:
 i. Phimongphisa ii. Tsungoro iii. Lekhüm iv. Pvürironsi

- Oküpeo engao shiang yitsüng 60-90 na janlana:** **1x5=5**

14. a. Chungiyi “Tiyi Enüng” ji yiotssen ji mmhona erana.

Mekana

- b. ‘Nno ntiolo helo rocho la?
 Osi meta kvüwoe na rochola?’
 i. Yiren shi jo ocho na nsancho la? (1)
 ii. Khyingroe jina kvüto janlancho la? (2)
 iii. Loroekhao jijo kvütvü la? (2)

2022

CLASS-IX (Phase-II)

HINDI

Total marks: 40

Time: 1½ hours

General instructions:

- Approximately 8 minutes is allotted to read the question paper and revise the answers.
- The question paper consists of 12 questions. All questions are compulsory.
- Internal choice has been provided in some questions.
- Marks allocated to every question are indicated against it.

N.B: Check that all pages of the question paper are complete as indicated on the top left side.

SECTION-A (लेखन)

- निम्नलिखित में से किसी एक प्रश्न के उत्तर को 100–150 शब्दों में लिखिए:- 6
 - 15 दिसंबर को आप पुलिए बादजे जा रहे हैं/जा रही हैं। इस मौके पर अपने दोस्त को बताते हुए एक आमंत्रण पत्र लिखिए।
अथवा
 - दिए हुए संकेत बिंदुओं के आधार पर कहानी को पूरा कीजिए:-
जंगल में एक शेर। वह जंगल के जानवरों को
सब जानवर परेशान। वे सब मिलकर खरगोश।
खरगोश को कुएँ के पास अपनी परछाई
..... कुएँ में छलॉग लगा दी।
- निम्नलिखित में से किसी एक प्रश्न के उत्तर को 50 शब्दों में लिखिए:- 4
 - अपनी पुरानी गाड़ी को बेचने के लिए एक विज्ञापन तैयार कीजिए।
अथवा
 - कोरोना अभी खत्म नहीं हुआ है इसलिए मास्क जरूरी है। इस संबंध में एक सूचना तैयार कीजिए।

SECTION-B (व्याकरण)

- निम्नलिखित विकल्पों में से सही उत्तर चुनकर लिखिए:-
 - क्रिया-विशेषण के कितने भेद होते हैं? 1

(i) दो	(ii) तीन
(iii) चार	(iv) पाँच
 - 'उपचार' में कौन सा उपसर्ग है ? 1

(i) चार	(ii) उ
(iii) उप	(iv) अप
- 'आहट' एवं 'ई' प्रत्यय लगाकर एक-एक शब्द बनाइये:- 2
- नीचे लिखे अनेक शब्दों के लिए एक शब्द लिखिए :- 2
 - जिसके माता-पिता न हों।
 - दिन में एक बार होनेवाला।

6. निम्नलिखित मुहावरा एवं लोकोक्ति का अर्थ लिखकर वाक्यों में प्रयोग कीजिए:- 2
- (a) प्राणों के लाले पड़ना (b) छोटी मुँह बड़ी बात
7. निम्नलिखित वाक्यों का हिंदी में अनुवाद कीजिए:-
- (a) He gave his property to both his son and daughter. 1
- (b) We are pleased to meet you. 1

SECTION-C (साहित्य)

8. निम्नलिखित विकल्पों में से सही उत्तर चुनकर लिखिए:-
- (a) 'वसंत' कविता के कवि कौन हैं ? 1
- (i) गोस्वामी तुलसीदास (ii) जयशंकर प्रसाद
- (iii) बालकृष्ण शर्मा (iv) बालगोपाल शर्मा
- (b) इनमें से किनका जन्म उत्तर प्रदेश के जौनपुर में हुआ था ? 1
- (i) भदंत आनंद कौसल्यायन (ii) रामनरेश त्रिपाठी
- (iii) गोस्वामी तुलसीदास (iv) कबीर दास
9. निम्नलिखित प्रश्नों के उत्तर 20-25 शब्दों में लिखिए:-
- (a) सेठ जी ने अपने मुनीम से क्या कहा ? 2
- (b) 'पुरीम' कैसा दिन है ? 2
10. निम्नलिखित में से किसी एक प्रश्न का उत्तर 40-50 शब्दों में लिखिए:- 4
- (a) बच्चे की पहचान अपने बेटे के रूप में कर लेने पर सेठ जी के व्यवहार में क्या परिवर्तन हुआ ?
- अथवा
- (b) लेखिका अपने बचपन और आज के बच्चों के बचपन में क्या-क्या अंतर पाती हैं ?
11. निम्नलिखित पद्यांशों में से किसी एक की संदर्भ सहित व्याख्या कीजिए:- 5
- (a) मगर उनकी लायी चिट्ठियाँ
पेड़, पौधे, पानी और पहाड़ बाँचते हैं।
- अथवा
- (b) थिड़क रही थी सांध्य पवन में पीपल की हर-हर डाली।
खेल रही थीं किरणों से पत्तियाँ सुनहली-हरियाली।।
12. निम्नलिखित पद्यांश को ध्यान से पढ़कर पूछे गये प्रश्नों के उत्तर लिखिए:-
- जब बहुत सुबह चिड़ियाँ उठकर,
कुछ गीत खुशी के गाती हैं।
कलियाँ दरवाजे खोल-खोल,
जब झुरमुट से मुसकाती हैं।
खुशबू की लहरें जब घर से,

बाहर आ दौड़ लगाती हैं ।
हे जग के सिरजनहार प्रभो!
तब याद तुम्हारी आती है!!

- | | | |
|-----|--|---|
| (a) | सुबह चिड़ियाँ उठकर क्या करती हैं ? | 1 |
| (b) | कलियाँ कहाँ से मुसकाती हैं? | 1 |
| (c) | किस चीज की लहरें बाहर आकर दौड़ लगाती हैं ? | 1 |
| (d) | ये सब देखकर किसकी याद आ रही है ? | 1 |
| (e) | उपरोक्त पद्योंश किस पाठ से ली गयी हैं ? | 1 |

2022
CLASS -IX (Phase II)
BENGALI

Total marks : 40

Time : 1½ hours

General Instructions :

- i) Approximately 8 minutes is allotted to read the question paper and revise the answers
- ii) The question paper consists of 13 questions. All questions are compulsory.
- iii) Internal choice has been provided in some questions.
- iv) Marks allotted to every question are provided indicated against it.

N.B. : Check that all pages of the question paper are complete as indicated on the top left side.

রচনা ও নির্মিতি (Writing)

1. নিচের যে কোনও একটি বিষয় বেছে নিয়ে ১০০ থেকে ১৫০ শব্দের মধ্যে উত্তর দাও :

- (ক) তুমি সুমন্দ্র/ সুচরিতা, তোমার এ বছরের জন্মদিনটি অনাথ আশ্রমের শিশুদের নিয়ে উদযাপন করেছিলে, সেই অনুষ্ঠানের বর্ণনা দিয়ে তোমার বন্ধুকে একটি চিঠি লেখো।

অথবা

6

- (খ) নিচের সূত্রগুলি দিয়ে একটি গল্প রচনা করে তার একটি উপযুক্ত নামকরণ করঃ

একবার ভগবান বুদ্ধ শিষ্যপরিবৃত হয়ে বসে আছেন সদ্য পুত্রহারা এক মা এসে কেঁদে পড়লেন তাঁর মরা ছেলের প্রাণ ফিরিয়ে দিতে হবে বুদ্ধদেব মহিলাটিকে মৃত্যুহীন কোনও একটি বাড়ি থেকে এক মুঠো সর্ষে আনতে বললেন মহিলা অনেক খুঁজেও কোথাও এমন বাড়ি খুঁজে পেলেন না, যেখানে কেউ কখনও মারা যায় নি মহিলা বুঝলেন মৃত্যু অনিবার্য বুদ্ধের পায়ের তলায় লুটিয়ে পড়লেন।

2. ৪০ থেকে ৫০ টি শব্দে নিচের যে কোনও একটি প্রশ্নের উত্তর দাও :

- (ক) কোহিমা নিউমার্কেট এলাকায় তোমার নবনির্মিত (newly constructed) বিলাসবহুল ফ্ল্যাটটি ভাড়া (rent) দিতে চাও। যথাযথ বর্ণনা দিয়ে ন্যায্য ভাড়ার উল্লেখ করে খবরের কাগজের জন্যে একটি বিজ্ঞাপনের খসড়া (draft) লেখো।

অথবা

4

- (খ) তুমি নবম শ্রেণিতে পাঠরত অভিষেক/ অভিষিক্তা, কলকাতা বিড়লা একাডেমী স্কুলের পরিবেশ ক্লাবের (eco club) ছাত্র সম্পাদক। এই জুন পরিবেশ দিবস (environment day) উপলক্ষে বৃক্ষরোপণ (plantation) কর্মসূচি নিয়েছ। স্কুলের সমস্ত শিক্ষার্থীকে সেই কর্মসূচিতে সামিল হওয়ার আহ্বান জানিয়ে স্কুলের বিজ্ঞপ্তিফলকে (notice board) একটি বিজ্ঞপ্তি (notice) দাও।

ব্যাকরণ ও অনুবাদ (Translation)

3. নিচের বিকল্পগুলি থেকে সঠিক উত্তরটি বেছে নাও :

- (ক) যে পদ প্রত্যক্ষভাবে ক্রিয়া সম্পাদন করে, তাকে বলে — 1
- (i) কর্তৃকারক (ii) কর্মকারক
- (iii) অপাদান কারক (iv) অধিকরণকারক
- (খ) তাসের ঘর মানে — 1
- (i) দুর্লভ দর্শন (ii) ক্ষণস্থায়ী
- (iii) বিশৃঙ্খল (iv) মূলেই ত্রুটি
- (গ) এর মধ্যে কোনটি সপ্তমী বিভক্তি নয়? 1
- (i) য (ii) কে
- (iii) এ (iv) তে

4. কারক- বিভক্তি নির্ণয় কর :

- (i) এ কলমে লেখা পড়ে না। 1
- (ii) সিন্দুকে গয়না আছে। 1
- (iii) আমার ভূতে ভয় নেই। 1

5. সার্থক বাক্য রচনা কর :

- (i) অক্লা পাওয়া 1
- (ii) কেউকেটা 1

6. বাংলায় অনুবাদ কর :

- (i) Congratulation on your success. 1
- (ii) A gentle breeze is blowing. 1

সাহিত্য – গদ্যাংশ ও পদ্যাংশ(Literature)

7. নিচের বিকল্পগুলি থেকে সঠিক উত্তরটি বেছে নাও :

- (ক) ‘ধুলা মন্দির’ কবিতাটি যে কাব্যের অন্তর্গত — 1
- (i) গীতালি (ii) গীতিমাল্য

(iii)	গীতাঞ্জলি	(iv)	নৈবেদ্য	
(খ)	রামের গনেশকে জাল ফেলে ধরেছিল —			1
(i)	বাঘা বাগদী	(ii)	ভগা বাগদী	
(iii)	শ্যাম লাল	(iv)	ভোলা	
(গ)	‘কবর’ শব্দের অর্থ —			1
(i)	সমাধি	(ii)	শ্মশান	
(iii)	মন্দির	(iv)	শবাধার	

২০ থেকে ২৫ টি শব্দে নিচের প্রশ্নগুলির উত্তর দাও :

8. অশ্বখ চারা উপড়ে ফেলায় ক্রুদ্ধ রামকে শান্ত করতে নারায়ণী কী কৌশল অবলম্বন করেছিলেন? 2
9. ‘কবর’ কবিতায় দাদীর কবর কোথায় ছিল? দাদুর কত বছর বিপত্তীক জীবন অতিবাহিত করছিলেন? 1+1=2
10. ‘ভারতবর্ষ’ পাঠে বৃদ্ধ রামায়ণের কোন অংশ পাঠ করতেন? ছেলে মেয়েদের মনে তার কী প্রতিক্রিয়া হত? 1+1=2
11. “ধুলা তাঁহার লেগেছে দুই হাতে”— “তাঁহার” বলতে কার কথা বলা হয়েছে? কিভাবে তাঁর হাতে ধুলো লাগলো? 1+1=2

কম – বেশি ৪০ থেকে ৫০ টি শব্দে নিচের প্রশ্নগুলির উত্তর দাও :

12. (ক) “রুদ্ধদ্বারে দেবালয়ের কোণে কেন আছিস ওরে?” —
- (i) কোন কবিতার অংশ? 1
- (ii) রুদ্ধ দেবালয়ে দেবতা থাকেন কি? 1
- (iii) কেন? 1
- (iv) কবির মতে দেবতা প্রাপ্তির প্রকৃত উপায় কী? 1

অথবা

- (খ) “সেই ট্র্যাডিশন সমানে চলেছে”—
- (i) কে কোন প্রসঙ্গে এই উক্তি করেছেন? (2)

(ii) ট্র্যাডিশন কিভাবে সমানে চলেছে তা বুঝিয়ে লেখো। (2)

৬০ থেকে ৯০ টি শব্দে নিচের প্রশ্নগুলির উত্তর দাও :

13. (ক) ‘আমরা’ কবিতাটিতে কবি বাঙালির শৌখবীর্যের কথা কিভাবে বর্ণনা করেছেন?

অথবা

5

(খ) রাম লালের সাথে দিগম্বরীর সদ্ভাব ছিল না কেন, তার যথার্থ কারণগুলো উল্লেখ করো।

2022

CLASS-IX (Phase-II)
ALTERNATIVE ENGLISH

Total marks: 40

Time: 1½ hours

General instructions:

- i) *Approximately 8 minutes is allotted to read the question paper and revise the answers.*
- ii) *The question paper consists of 11 questions. All questions are compulsory.*
- iii) *Internal choice has been provided in some questions.*
- iv) *Marks allocated to every question are indicated against it.*

N.B: Check that all pages of the question paper are complete as indicated on the top left side.

Unit – I (Reading)

1. Read the poem and answer the questions that follow:

I had a dove and the sweet dove died
And I thought it died of grieving
O, what could it grieve for? Its feet were tied
With a silken thread of my own hand's weaving;
Sweet little red feet! Why should you die-
Why should you leave me, sweet bird! Why?
You lived lone on the forest-tree,
Why, pretty thing! Would you not live with me?
I kissed you oft and gave you white peas;
Why not live sweetly, as in the green trees.

John Keats

Read the poem and complete the summary:**5x1=5**

When his dove died the poet thought it had died of _____. He wondered why it should _____ when it lived _____ on the forest tree. The poet said that he _____ the dove often and gave it white peas. He asked why the dove did not live _____ as in the green trees.

Unit – II (Writing and Applied Grammar)

2. a. Write a story in about 100-150 words starting with the following sentence- 'My sister became my best friend since then. It all started when ...'

6

Or

- b. You woke up with a severe toothache. Call the dentist's office to make an appointment for the evening. Remember to keep your dialogue to 100-150 words.

3. Insert punctuation marks wherever necessary:**4x½=2**

"i wish I had a lot of property," said the wife. if one could be wished for, I think I should wish for knowledge, not for the property, said the husband

4. Complete these sentences in indirect speech.**2x1=2**

- a. The male rat said, "I'll collect the grains".

The male rat said that _____.

- b. The teacher said to the students, "May you have success in life."

The teacher wished the students _____

Unit – III (Literature)

5. Choose the correct answer from the alternatives given:**4x1=4**

- (a) What crushed her son's tender life in the poem, 'Mother's Tears'?

(i) Drugs

(iii) Beaus and sweethearts

(ii) Alcohol

(iv) Freedom

- (b) What is the Jester’s role in the drama, ‘*The Tale of Ivan the Fool*’?
 - (i) Repair the roof of the devil’s house
 - (ii) Check the hands of the guests
 - (iii) Accompany the women to the palace
 - (iv) Spy for the devil
- (c) What is a prism of God’s light in the poem, ‘*The Soul’s Prayer*’?
 - (i) Life (iii) Death
 - (ii) Knowledge (iv) Truth
- (d) What did the devil first disguise himself as?
 - (i) Peasant (iii) Nobleman
 - (ii) Merchant (iv) General

Answer the following questions in about 20-25 words:

2x2=4

- 6. Why did the devil decide to take over from the three imps to destroy Ivan?
- 7. Why did the mason refuse to repair the devil’s roof?

Answer the following questions in about 40-45 words:

- 8. ‘*He looked sternly across the table at his little son, who felt so ashamed of himself that he hung his head down, and grew quite scarlet, and began to cry into his tea.*’ (*The Devoted Friend*)
 - i) Why was the Miller’s son ashamed of himself? **1**
 - ii) Why did the Miller’s son want to invite Hans to their house? **3**

- 9. a. Where did the mother go wrong in raising her son? What was the result of her actions? **2+2=4**

Or

- b. Describe the child’s attitude, knowledge and innocence in the poem, ‘*The Soul’s Prayer.*’ (4)
- 10. Why is Ivan considered a fool? Mention three instances of ‘foolish’ behaviour. **1+3=4**

Read the lines and answer the questions that follow:

- 11. ‘*Soldiers playing tunes? What would Ivan know about the use of soldiers? It would take a man of the army to know to use them better.*’
 - a. Who says these lines and to whom? **1+1=2**
 - b. What does the speaker mean when he says, ‘a man of the army’? **2**
 - c. What is the mood? **1**

2022
Class IX (Phase-II)
FOUNDATION OF INFORMATION TECHNOLOGY

Totalmarks:35

Time: 1½ hours

General Instructions:

- i) *Approximately 10 minutes is allotted to read the question paper and revise the answers.*
- ii) *All questions are compulsory.*
- iii) *The question paper consists of 16 questions.*
- iv) *Marks allocated to every question are indicated against it.*

N.B:*Check that all pages of the question paper is complete as indicated on the top left side.*

Choose the correct answer from the given alternatives:

- 1. Mail merge fields are also called _____ . **1**
 - (a) data source
 - (b) main document
 - (c) place holders
 - (d) none of these
- 2. To make a duplicate of a slide, which is the right shortcut key? **1**
 - (a) Ctrl + N
 - (b) Ctrl + D
 - (c) Ctrl + V
 - (d) Ctrl + R
- 3. To add the range (A1 and A20) together, which of the following formula is used? **1**
 - (a) = SUM (A1 : A20)
 - (b) = ADD (A1 + A20)
 - (c) = together (A1 : A20)
 - (d) A1 plus A20
- 4. _____ is a set of values with which a chart is plotted. **1**
 - (a) Chart area
 - (b) Plot area
 - (c) Data series
 - (d) None of these
- 5. This practice usually involves the addition of a page number or a paragraph number in the case of web content. **1**
 - (a) Paraphrase
 - (b) Cite
 - (c) Quoting
 - (d) Citing quotes

Answer the following questions in about 10-20 words:

- 6. What is meant by merging and splitting of cells? **2**
- 7. Write any two benefits of mail merge. **2**
- 8. What is an Active Cell? **2**
- 9. Explain AutoFill feature. **2**
- 10. What is an Argument? **2**

Answer the following question in about 20-30 words:

- 11. Explain any three types of views in PowerPoint. **3**
- 12. Explain any three types of animation effects. **3**
- 13. Explain the types of data in MS-Excel. **3**
- 14. Explain any three function errors in Excel. **3**

Answer the following question in about 50-70 words:

- 15. What is a chart? Explain any three types of charts. **4**
- 16. What is software piracy? Explain any three types of software piracy. **4**

2022
CLASS - IX (Phase-II)
MUSIC

Total marks : 35

Time : 1½ hours

General instructions:

- i) *Approximately 7 minutes is allotted to read the question paper and revise the answers.*
- ii) *All questions are compulsory.*
- iii) *The question paper consists of 17 questions.*
- iv) *Marks allocated to every question are indicated against it.*

N.B: *Check to ensure that all pages of the question paper is complete as indicated on the top left side.*

SECTION-A: (Ethnic Music)

1. The pentatonic scale corresponds to : **1**
 - a) “doh, re, mi, fa, so, la, ti, doh”
 - b) “doh, re, mi, so, la, doh”
 - c) “re, fa, la, ti”
 - c) “doh, ti, do, soh”

2. Lullabies have a slow and : **1**
 - a) comforting rhythm
 - b) rocking rhythm
 - c) monotonous rhythm
 - d) gentle rhythm

3. What type of ethnic song has lyrics which are often ‘modern’ in concept?: **1**
 - a) story song
 - b) love song
 - c) nursery song
 - d) feast song

4. What are lullabies ? **2**

SECTION - B : (Western Music)

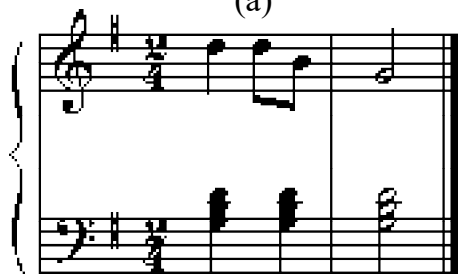
5. Which major key has one sharp in its key signature? **1**
 - a) G major
 - b) F major
 - c) E minor
 - d) A minor

6. On which degree of the scale is the tonic triad built ? **1**
 - a) 2nd degree
 - b) 1st degree
 - c) 3rd degree
 - d) 4th degree

7. What is the other name of 'minim' ? 1
 a) quarter note b) quaver note
 c) whole note d) half note

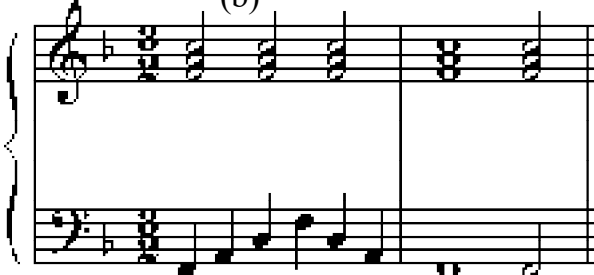
8. The following music is written using the tonic triad. In each case name the key. Then label the chord using roman numeral. 1+1=2

(a)



key : _____ chord : _____

(b)



key : _____ chord : _____

9. Write a bracket (\square) above the sequences. $\frac{1}{2}+4=2$



10. Answer the following rhythms : 2




11. Write two more repeats to show the ostinato pattern. 2




12. a) What is the term given to a dot that is placed below or above a note (\bullet) . 1+1=2
 b) Write its meaning.

13. Write tunes to the given rhythm : $1\frac{1}{2}+1\frac{1}{2}=3$

a) Using the first five degrees of the Am scale.



b) Using notes of the tonic triad in the key of C major.



14. Write the key signature, the tonic triad and its first inversion for the given keys in the treble clef. **1½+1½= 3**
- a) Key of F major
 - b) Key of E minor

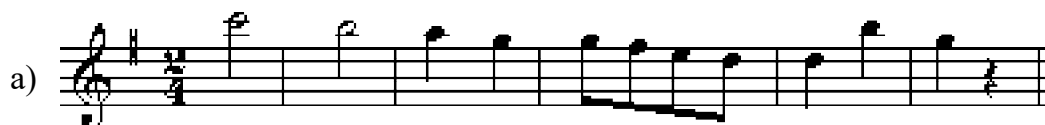
15. a) Using quavers beamed in fours, write a broken chord using G major tonic triad (going up). Use patterns of four notes each time. Finish on the first G above the staff. **1½+1½= 3**



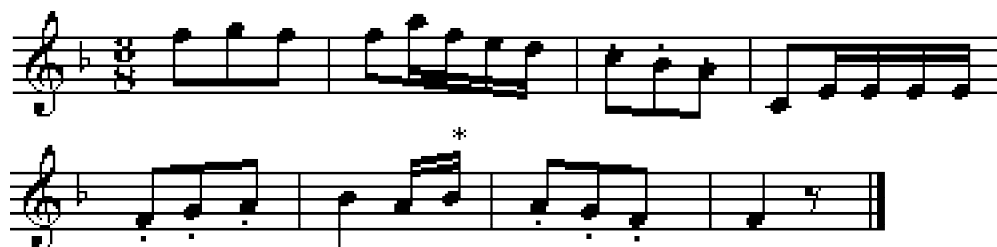
- b) Using crotchets, write a broken chord using D minor tonic triad (going up) use patterns of three notes each time. Finish on middle C .




16. Work out the key of the following music. **3x1=3**



17. Look at the following music and answer the questions below : **5x1= 5**



- a) Name the rest in the last measure.
- b) How many times does the rhythm  occur ?
- c) Name the note marked with asterisk (*) in measure 6..
- d) On which degree of the scale does the melody begin ?
- e) What is the interval between the first two notes (measure 1) of the piece ?

2022
CLASS – IX (Phase-II)
BOOK-KEEPING & ACCOUNTANCY

Total marks : 35

Time : 1½ hours

General instructions:

- i) *Approximately 8 minutes is allotted to read the question paper and revise the answers.*
 - ii) *The question paper consists of 14 questions. All questions are compulsory.*
 - iii) *Internal choice has been provided in some questions.*
 - iv) *Marks allocated to every question are indicated against it.*
- N.B: Check that all pages of the question paper is complete as indicated on the top left side.*

Choose the correct answer from the given alternatives:

1. Total assets in a business is ` 8,00,000 and total liabilities is ` 5,00,000. The difference is called **1**
(a) income (b) expenses
(c) capital (d) goodwill

2. When a prefix or suffix is added to a nominal A/c, it becomes a **1**
(a) real A/c (b) personal A/c
(c) impersonal A/c (d) tangible real A/c

3. Which of these accounts has debit balance? **1**
(a) income received in advance (b) bank loan
(c) creditors for goods (d) prepaid insurance premium

4. The verification that debits and credits in the ledger are equal is called **1**
(a) trial balance (b) journal
(c) trading A/c (d) none of these

5. Errors which affect one account can be **1**
(a) errors of principle (b) errors of posting
(c) errors of omission (d) none of these

Answer the questions in about 20-30 words:

6. What is an account? **2**

7. What is balancing of an account? **2**

8. Write any two features of a trial balance? **2**

Answer the questions in about 30-50 words:

- 9. Explain any three advantages of a journal. 3
- 10. Write any three features of ledger. 3
- 11. Explain the balance method used for preparing trial balance. 3

Answer the questions in about 70-100 words:

- 12. a. Journalise the following transactions for the year 2020: 5

June 1.	Commenced business with cash	1,30,000
June 2.	Purchased goods for cash	20,000
June 3.	Sold goods to Imsu	10,000
June 5.	Bought furniture by cheque	5,000
June 10.	Drew cash from bank	3,000

Or

- b. What is a discount? Differentiate between trade discount and cash discount. (1+4=5)

- 13. a. Following transactions are of M/s James and Sons for the month of June 2018. Prepare their Sales book: 5

June 5.	Sold to M/s Rani on credit 30 shirts @ ` 50 each 10 trousers @ ` 100 each Less: Trade discount @ 10%	
June 12.	Sold old machinery to M/s John & Co on credit ` 2,000	
June 18.	Sold 20 shirts on credit to M/s Rahul & Sons @ ` 50 each	
June 25.	Sold on credit to M/s David 100 shirts @ ` 150 each 10 overcoats @ ` 500 each Less: Trade discount @ 10%.	

Or

- b. What is meant by ledger? State any three advantages of ledger account. (2+3=5)

- 14. a. Prepare a trial balance as on 31st March, 2020 from the following ledger balances:

	`		`
Purchases	4,000	Debtors	3,000
Sales	5,000	Creditors	5,000
Stock	8,000	Capital	10,000
Overdraft	3,000	Machinery	1,000
Salaries	2,000	Bank	5,000

Or

- b. Explain the purpose and functions of trial balance. 5

2022

CLASS - IX(Phase-II)

INFORMATION TECHNOLOGY (Vocational)

Total marks : 25

Time : 1 hour

General instructions :

- i) Approximately 8 minutes is allotted to read the question paper and revise the answers.
- ii) All questions are compulsory except Q. nos.10 to 12 where general option is given.
- iii) The question paper consists of 12 questions.
- iv) Marks allocated to every question are indicated against it.

N.B: Check to ensure that all pages of the question paper are complete as indicated on the top left side.

Choose the correct answer from the given alternatives:

5x1=5

- 1. i) What is a short range wireless communication called?
(a) wifi (b) internet
(c) bluetooth (d) PS
- ii) Which of the following is a shortcut key to undo last action?
(a) ctrl+x (b) ctrl+y
(c) ctrl+w (d) ctrl+z
- iii) A business where a seller and buyer exchange an item is called
(a) product business (b) hybrid business
(c) service business (d) manufacturing business
- iv) Which of the following is a non-renewable resource?
(a) wind (b) diesel
(c) sun (d) water
- v) The skills used for promoting green economy is called
(a) green economy (b) green job
(c) green skills (d) green growth

Answer the following questions in one word or one sentence:

- 2. What is cell? **1**
- 3. Name any two components of libre office. **1**
- 4. Define window in a presentation. **1**
- 5. Write the full form of PDF. **1**

Answer the following questions in 20-50 words:

- 6. What is a spreadsheet? Write any two uses of spreadsheet. **1+1=2**
- 7. Differentiate between label and values in a spreadsheet. **2**
- 8. Differentiate between slide and slide transition. **2**
- 9. Explain any two characteristics of a good quality presentation. **2**

Answer any two from the following questions in 60-100 words:

- 10. Write any four commonly used basic functions, syntax and its uses in calc. **4**
- 11. Explain any four types of view in a presentation. **4**
- 12. Write down the steps to run a slide show. **4**

2022
CLASS - IX (Phase-II)
Retail (Vocational)

Total marks: 25

Time: 1 hour

General instructions:

- i) Approximately 5 minutes is allotted to read the question paper and revise the answers.
- ii) All questions are compulsory.
- iii) The question paper consists of 12 questions.
- iv) Marks allocated to every question are indicated against it.

N.B: Check that all pages of the question paper are complete as indicated on the top left side.

1. Choose the correct answer from the given alternatives: 5x1=5

- i. The level at which the retailer places an order before the goods reach a minimum level is known as
 - (a) minimum stock level
 - (b) danger level
 - (c) re-order level
 - (d) maximum stock level
- ii. A legal document that is used at the time of dispatching and delivering the goods to the customer is known as
 - (a) delivery note
 - (b) invoice
 - (c) bin card
 - (d) consignment note
- iii. In which type of business does a seller help the buyer to finish some work?
 - (a) Product business
 - (b) Hybrid business
 - (c) Manufacturing business
 - (d) Service business
- iv. Which of the following mean that a retailer should define store approach for building customer rapport?
 - (a) Be adaptable
 - (b) Remaining focused
 - (c) Smile
 - (d) Avoid assumptions
- v. Which of the following shortcut key is used to paste a file?
 - (a) Ctrl+c
 - (b) Ctrl+p
 - (c) Ctrl+v
 - (d) Ctrl+z

Answer the following questions in one word or one sentence:

2. What is Bin Card? **1**
3. State any two customer expectations from the retailer. **1**
4. Write any two main types of floor needs in a retail store. **1**
5. What are green skills? **1**

Answer the following questions in 20-50 words:

6. What is meant by delivery note in stock handling? **2**
7. Briefly explain any two basic needs of customer. **2**
8. Write any two points to effectively deal with customers. **2**

9. What are green jobs? List any two sectors which have the potential for green jobs. 1+1=2

Answer any two from the following questions in 60-100 words:

10. Briefly explain any four types of handling equipments in a retail store. 4
11. Mention any four advantages of customer services. 4
12. Briefly describe the steps on starting a business. 4

2022

CLASS - IX (Phase-II)
Tourism & Hospitality (Vocational)

Total marks: 25

Time: 1 hour

General instructions:

- i) Approximately 5 minutes is allotted to read the question paper and revise the answers.
- ii) All questions are compulsory.
- iii) The question paper consists of 12 questions.
- iv) Marks allocated to every question are indicated against it.

N.B: Check that all pages of the question paper are complete as indicated on the top left side.

1. Choose the correct answer from the given alternatives: 5x1=5

- i. What does GPS stand for?
(a) Global Payment System (b) Global Pointing System
(c) Global Positioning System (d) Global Programming System
- ii. A printed or written statement of the money owed for goods or services availed is known as
(a) Menu (b) Bill
(c) EDC (d) Comment Card
- iii. Which of the following is needed for setting up A' La Carte table?
(a) Water Goblet (b) Soup spoon
(c) Red wine glass (d) Meat fork and knife
- iv. The aim of entrepreneurship is to
(a) Earn a profit (b) Solve customer needs innovatively
(c) Both (a)&(b) (d) None
- v. Dressing and grooming are important because they help us look
(a) shabby (b) untidy
(c) intelligent (d) smart

Answer the following questions in one word or one sentence:

2. What is a menu? **1**
3. What is etiquette? **1**
4. What is CCG in F&B? **1**
5. What are green skills? **1**

Answer the following questions in 20-50 words:

6. State any two procedures for handling guest problems in F&B industry. **2**
7. Write any two procedures to be followed in greeting and seating a guest. **2**
8. What is internet? Write any two common uses of internet. **1+1=2**
9. What is entrepreneurship? Write any one benefit of entrepreneurship. **1+1=2**

Answer *any two* from the following questions in 60-100 words:

- 10. Briefly explain any four qualities of entrepreneur. **4**
- 11. Write any four benefits of effective communication in F&B industry. **4**
- 12. Write any four procedures of serving water or welcome drink in F&B. **4**

2022

CLASS - IX (Phase-II)
Beauty & Wellness (Vocational)

Total marks: 25

Time: 1 hour

General instructions:

- i) Approximately 5 minutes is allotted to read the question paper and revise the answers.
- ii) All questions are compulsory.
- iii) The question paper consists of 12 questions.
- iv) Marks allocated to every question are indicated against it.

N.B: Check that all pages of the question paper are complete as indicated on the top left side.

1. Choose the correct answer from the given alternatives: 5x1=5

- i. Which of the following is not a nail shape?
 - a) Oval
 - b) Round
 - c) Squoval
 - d) Cylindrical
- ii. Which of the following hairstyle is a type of bun?
 - a) Chignon
 - b) Braid
 - c) Knot
 - d) Plait
- iii. It is the part of the nail matrix called the sterile matrix.
 - a) Nail plate
 - b) Nail bed
 - c) Nail root
 - d) Nail growth
- iv. This type of hair are tightly curled and retain the same shape even when wet.
 - a) Straight
 - b) Coily
 - c) Wavy
 - d) Curly
- v. A project or undertaking that is bold and fulfills a need of the society is known as
 - a) entrepreneur
 - b) entrepreneurship
 - c) enterprise
 - d) business

Answer the following questions in one word or one sentence:

2. Name any two hair accessories. **1**
3. Name the two most common services that are provided by beauty parlors. **1**
4. Mention any two uses of internet. **1**
5. Write any two qualities an entrepreneur needs to have. **1**

Answer the following questions in 20-50 words:

6. Name any two hairstyling tools or products and write their uses. **1+1=2**
7. What is face clean up? State any one benefit of face clean up. **1+1=2**
8. Write any two practices for the safe disposal of waste in a salon. **2**
9. State any two steps to build self-confidence. **2**

Answer *any two* from the following questions in 60-100 words:

10. Write any four essential ways to prepare and maintain the work area in a salon. 4
11. Mention any four responsibilities of an Assistant Beauty Therapist. 4
12. Briefly explain any four basic principles of professional communication skills. 4

2022

CLASS - IX(Phase-II)

ELECTRONICS & HARDWARE (Vocational)

Total marks : 25

Time : 1 hour

General instructions :

- i) Approximately 5 minutes is allotted to read the question paper and revise the answers.
- ii) All questions are compulsory except Q. nos.10 to 12 where general option is given.
- iii) The question paper consists of 12 questions.
- iv) Marks allocated to every question are indicated against it.

N.B: Check to ensure that all pages of the question paper are complete as indicated on the top left side.

1. Choose the correct answer from the given alternatives: 5x1=5

- i. Which of the following is connected in series circuit?
(a) ammeter (b) voltmeter
(c) meter (d) ohm meter
- ii. A business where a seller helps the buyer to finish some work is known as
(a) product business (b) hybrid business
(c) trade business (d) service business
- iii. Which of the following is an example of renewable resource?
(a) coal (b) solar energy
(c) diesel (d) petrol
- iv. Who was the first person to successfully use chlorine to disinfect water supply?
(a) Robert Hooke (b) John Snow
(c) AV Leewenhook (d) Darwin
- v. Which of the following is a concept of modern waste management?
(a) sustainable development (b) recycle
(c) pollution control (d) water treatment

Answer the following questions in one word or one sentence:

- 2. What is a TDS meter? 1
- 3. What is water purification? 1
- 4. What is sterilization of water? 1
- 5. Define green skills. 1

Answer the following questions in 20-50 words:

- 6. Write any two advantages of digital meter. 2
- 7. Name any two methods of water purification through chemical process and biological process. 2
- 8. What is solar distillation? 2
- 9. What is entrepreneurship? 2

Answer any two from the following questions in 60-100 words:

- 10. Explain four benefits of entrepreneurship. 4
- 11. Suggest any four steps in handling water purifier. 4
- 12. State any four precautions to be taken while using multi-meter. 4

2022

CLASS - IX (Phase-II)

Multi Skill Foundation Course (Vocational)

Total marks: 25

Time: 1 hour

General instructions:

- i) Approximately 5 minutes is allotted to read the question paper and revise the answers.
- ii) All questions are compulsory.
- iii) The question paper consists of 12 questions.
- iv) Marks allocated to every question are indicated against it.

N.B: Check that all pages of the question paper are complete as indicated on the top left side.

1. Choose the correct answer from the given alternatives: 5x1=5

- i. Preservation of vegetables or fruits in salt or vinegar with spice and oil is called
 - (a) Canning
 - (b) Freezing
 - (c) Pickling
 - (d) Drying
- ii. A type of electrical current whose direction and value changes for specific number of time in an interval of one second is known as
 - (a) conventional current
 - (b) direct current
 - (c) alternating current
 - (d) leakage current
- iii. Alloy used for soldering is called
 - (a) solder
 - (b) flux
 - (c) lead
 - (d) tin
- iv. What is a short range wireless technology that helps connect with other devices called?
 - (a) Wi-fi
 - (b) Bluetooth
 - (c) Internet
 - (d) Global Positioning System
- v. An economic activity which is related with production and distribution of goods and services for satisfying human wants is known as
 - (a) entrepreneurship
 - (b) entrepreneur
 - (c) sustainable development
 - (d) business

Answer the following questions in one word or one sentence:

2. List any two examples of cereals. **1**
3. Name any two aromatic spices. **1**
4. What does ICT stand for? **1**
5. What is a Screwdriver used for? **1**

Answer the following questions in 20-50 words:

6. What is product business? Give one example. **1+1=2**
7. Draw any one electrical joint and name it. **1+1=2**
8. State any two functions of fuse. **2**
9. What is food adulteration? Name one standard that have been set to maintain the quality of various food items in India. **1+1=2**

Answer any two from the following questions in 60-100 words:

- 10. Briefly explain the reduce, reuse and recycle concept of waste management. **4**
- 11. Describe the procedure of staircase wiring with the help of a diagram. **2+2=4**
- 12. What is costing? Write any three advantages of costing. **1+3=4**

2022

CLASS - IX (Phase-II)
AGRICULTURE (Vocational)

Total marks : 25

Time : 1 hour

General instructions :

- i) Approximately 5 minutes is allotted to read the question paper and revise the answers.
- ii) All questions are compulsory except Q. nos.10to 12 where general option is given.
- iii) The question paper consists of 12 questions.
- iv) Marks allocated to every question are indicated against it.

N.B: Check to ensure that all pages of the question paper are complete as indicated on the top left side.

1. Choose the correct answer from the given alternatives: 5x1=5

- i. The Latin word 'solum' means
 - (a) soil
 - (b) solanaceous
 - (c) sandy
 - (d) shady
- ii. Transplanting is done when the weather is
 - (a) sunny
 - (b) hot
 - (c) rainy
 - (d) cloudy
- iii. Which of the following nutrient promotes growth of stem and leaves?
 - (a) sulphur
 - (b) nitrogen
 - (c) calcium
 - (d) phosphorous
- iv. What does GPS stand for?
 - (a) global pointing system
 - (b) global positioning system
 - (c) global program system
 - (d) global payment system
- v. The skills used for promoting green economy are known as
 - (a) green growth
 - (b) green club
 - (c) green consumer
 - (d) green skills

Answer the following questions in one word or one sentence:

2. What is crop rotation? **1**
3. Write an example of micro nutrient. **1**
4. Write the full form of FYM. **1**
5. What is entrepreneurship? **1**

Answer the following questions in 20-50 words:

6. What is transplanting? Write any one factor that should be considered in the selection of seedlings for transplanting. **1+1=2**
7. Write any two advantages of manures. **2**
8. State any two importances of soil. **2**
9. Write any four applications of ICT at work place. **2**

Answer any two from the following questions in 60-100 words:

10. What is soil testing? Write any three purposes of soil testing. **1+3=4**
11. What is intercropping? State any three advantages of intercropping. **1+3=4**
12. What are fertilizers? Write three advantages of fertilizers. **1+3=4**

2022

CLASS - IX (Phase-II)
Automotive (Vocational)

Total marks: 25

Time: 1 hour

General instructions:

- i) Approximately 5 minutes is allotted to read the question paper and revise the answers.
- ii) All questions are compulsory.
- iii) The question paper consists of 12 questions.
- iv) Marks allocated to every question are indicated against it.

N.B: Check that all pages of the question paper are complete as indicated on the top left side.

1. Choose the correct answer from the given alternatives: 5x1=5

- i. Petrol and diesel fuels are mixtures of
 - (a) Hydrocarbons
 - (b) Carbons
 - (c) Nitrogen
 - (d) Carbon monoxide
- ii. Which of the following is used to top-up battery electrolyte level?
 - (a) Oxygen
 - (b) Pure water
 - (c) Distilled water
 - (d) Hydrogen
- iii. The vehicle which combines an internal combustion engine and electric motor is known
 - (a) Electric car
 - (b) Biomass fuel car
 - (c) CNG car
 - (d) Hybrid vehicle
- iv. What does GPS stand for?
 - (a) Global Payment System
 - (b) Global Positioning System
 - (c) Global Program System
 - (d) Global Placement System
- v. Skills used for promoting green economy are known as
 - (a) green energy
 - (b) green jobs
 - (c) green skills
 - (d) green environment

Answer the following questions in one word or one sentence:

2. What is electric car? **1**
3. What is auto emission? **1**
4. Write any one tip to extend the life of a vehicle. **1**
5. What are green jobs? **1**

Answer the following questions in 20-50 words:

6. Suggest any two ways to control pollution from automobiles. **2**
7. State any four common activities in the workshop. **2**
8. Write any two outcomes of innovation in automobile industry. **2**
9. Briefly explain any two benefits of entrepreneurship. **2**

Answer any two from the following questions in 60-100 words:

- 10. Briefly explain G-Force Control Technology (G-CON) as an innovative car safety technology. **4**
- 11. Mention any four safety rules to be followed during servicing of vehicle. **4**
- 12. What is computer system? Briefly explain the hardware and software of the computer system. **1+3=4**
